

Soprano Sax. in B^b

(Clarinet in B^b)

行進曲

海を越える握手

Hands Across the Sea March

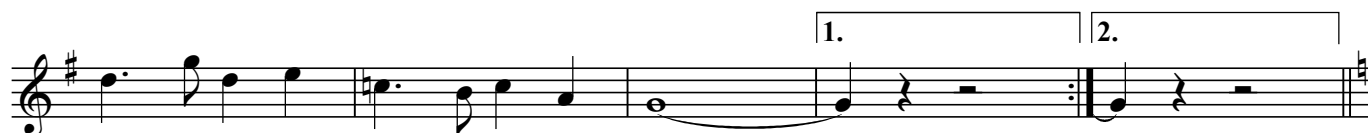
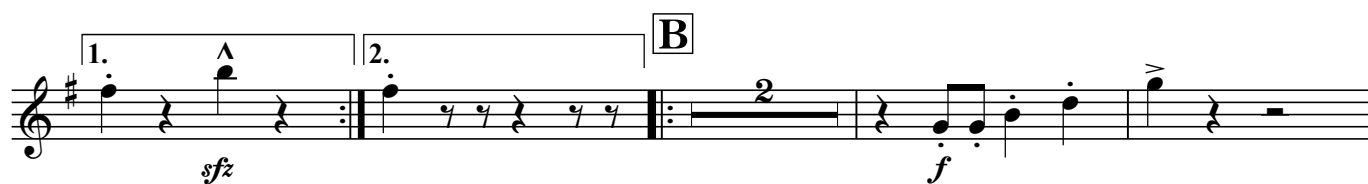
スーザ

J.Ph.Sousa

編曲：吉田達哉

Arr. by T.Yoshida

Tempo di marcia



Hands Across the Sea March - S.Sx. - 2

C Trio

p

p cresc.

1. 2.

D

ff

ff

p

E

ff

ff

ff

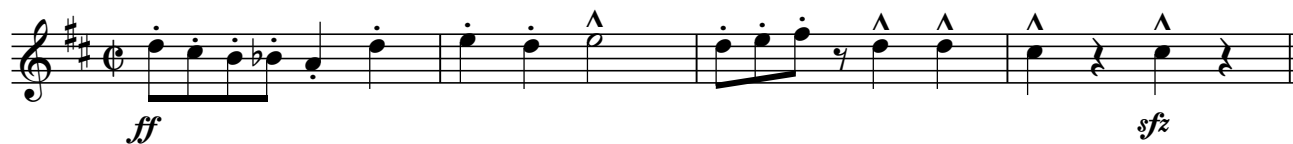
1. 2.

Alto Sax. in E^b

行進曲
海を越える握手
Hands Across the Sea March

スーザ
J.Ph.Sousa
編曲：吉田達哉
Arr. by T.Yoshida

Tempo di marcia



A



1. 2. **B**



C Trio

Musical notation for section C, measures 1-10. The first staff (measures 1-4) is marked *p*. The second staff (measures 5-10) is marked *p cresc.*. The section concludes with a first ending (measures 11-12) and a second ending (measures 13-14).

D

Musical notation for section D, measures 15-24. The first staff (measures 15-18) is marked *ff*. The section concludes with a first ending (measures 21-22) and a second ending (measures 23-24).

E

Musical notation for section E, measures 25-34. The first staff (measures 25-28) is marked *ff*. The section concludes with a first ending (measures 31-32) and a second ending (measures 33-34).

Tenor Sax. in B \flat

行進曲

海を越える握手

Hands Across the Sea March

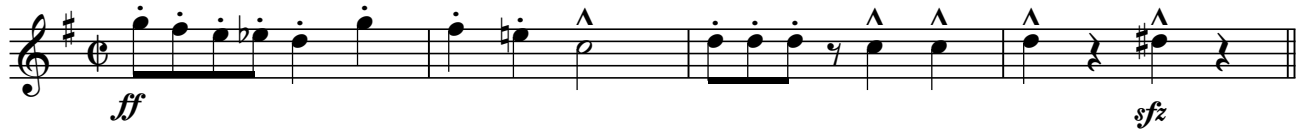
スーザ

J.Ph.Sousa

編曲：吉田達哉

Arr. by T.Yoshida

Tempo di marcia



A



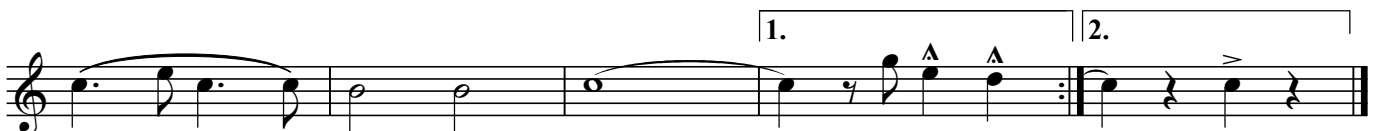
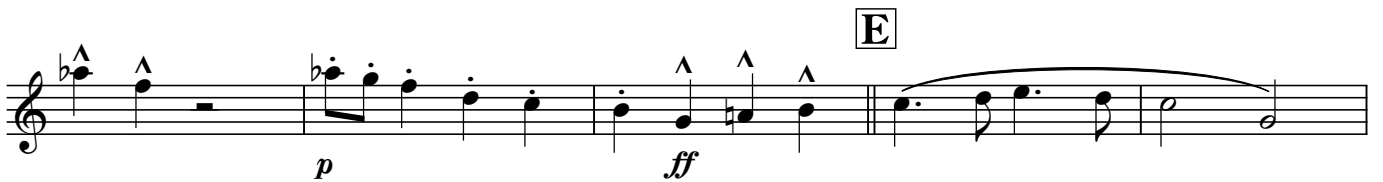
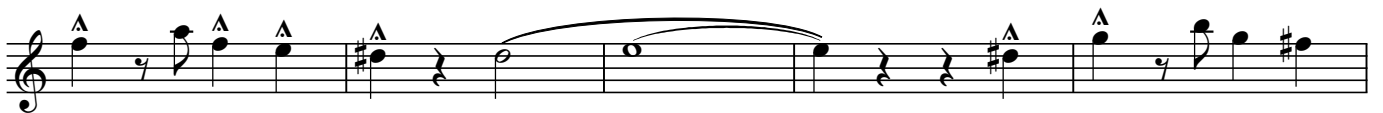
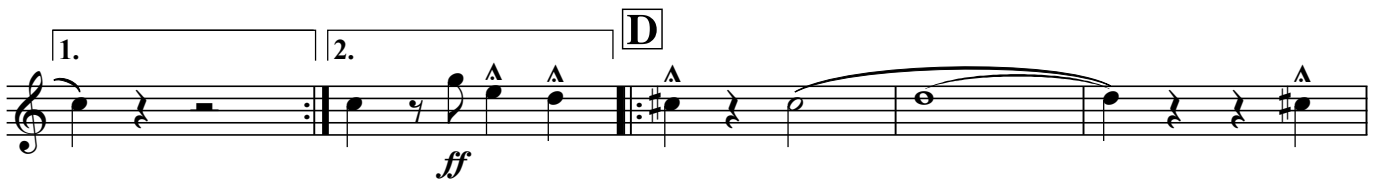
1. 2. **B**



1. 2.



C Trio



Baritone Sax. in E \flat

行進曲

海を越える握手

Hands Across the Sea March

スーザ

J.Ph.Sousa

編曲：吉田達哉

Arr. by T.Yoshida

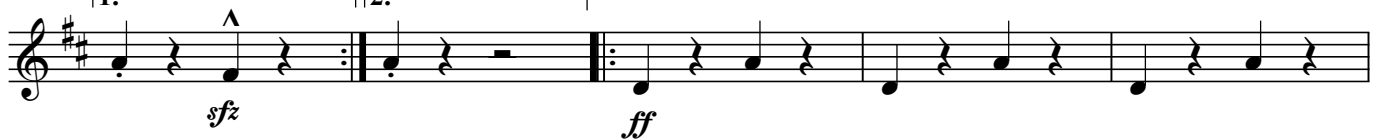
Tempo di marcia



A



1. 2. **B**

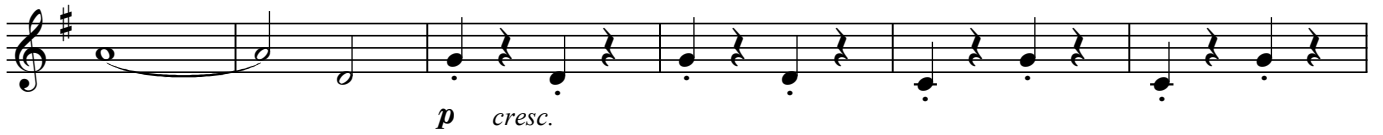
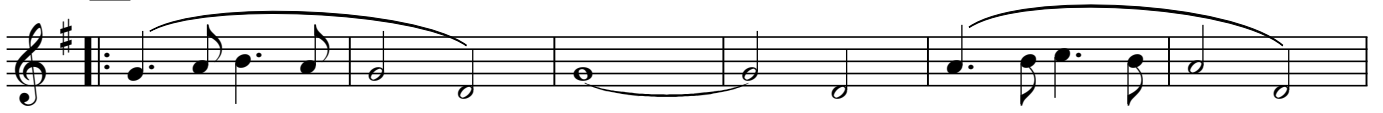


1. 2.



Hands Across the Sea March - Br.Sx. - 2

C Trio



D



E

